

## Download, Install and Configure Secure Shell

Secure Shell is a program that allows secure network services over an insecure network. The SSH Secure Shell for Workstations Windows client, replaces other insecure terminal application such as Telnet and FTP. It allows you to securely remote login to remote host computers and provides encrypted and authenticated communication between two untrusted hosts.

### Requirements:

In order for you to properly install and configure the Secure Shell application you must download both the Secure Shell application and the license file (license.dat).

### Download Instructions:

To download the Secure Shell application, open a web browser such as Internet Explorer and type in the location window or click the link below:

<http://its.union.edu/jservices/software.htm>

The URL will place you at a window with various downloadable software applications. Double-click on SSHWinSecureShell-3.2.9.exe. When given the options to Open, Save, or Cancel, choose the Save option. Download the Secure Shell application to the desktop or to a folder of your choice.

Next you are required to download the license.dat file. To download the license file, click on license.dat the table of downloadable software. Download the license.dat file to the same location where you save the SSHWinSecureShell-3.2.9.exe by right-clicking on the link and selecting Save Target As.... (NOTE: If using Internet Explorer, clicking on the link may cause the browser to display the contents of the file and will not download it).

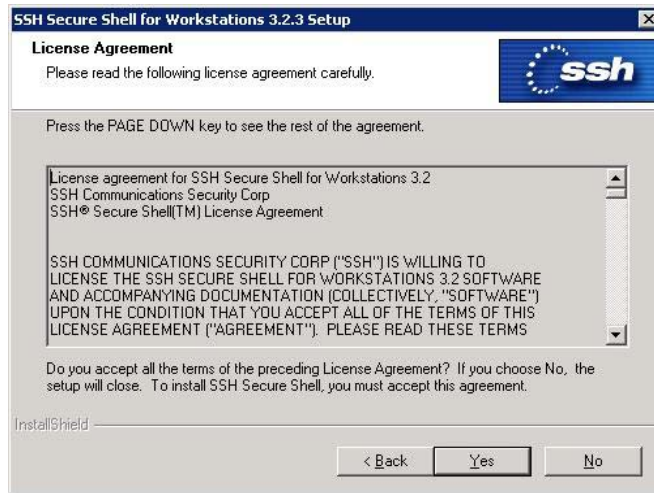
Downloading is complete. Please go to the Installation portion of this document.

### Installation

1. Double-click the SSHSecureShellClient-3.2.9.exe to start the installation.
2. Click Next.



3. Read the license agreement and click Yes.



4. Click Next.



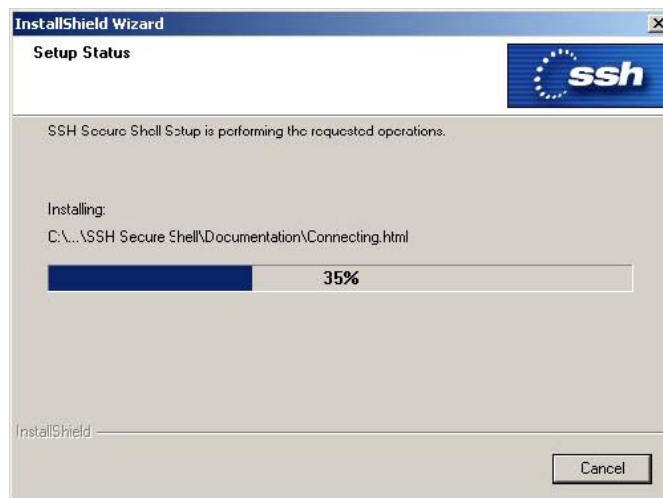
5. Click Next.



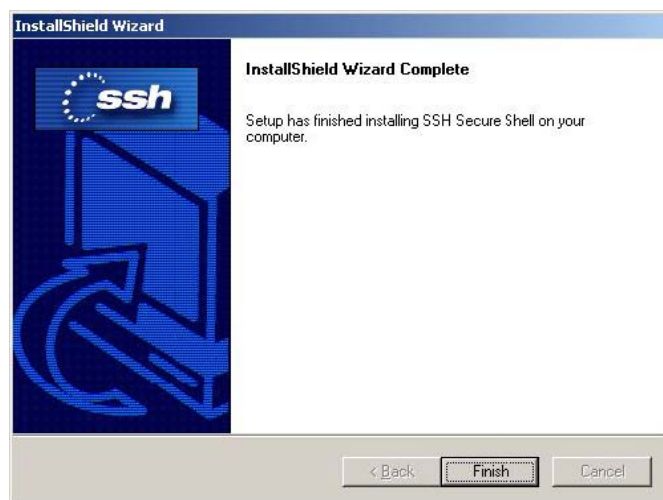
6. Click Next.



7. The following installation screen will be displayed.



8. Click Finish.



9. **IMPORTANT:** You must copy the license.dat file into the SSH folder. Go to where license.dat is currently stored, and right click on the license.dat file. Select Copy from the menu that comes up. Next navigate into the folder C:\Program Files\SSH Communications Security\SSH Secure Shell\. This folder is where the SSH Program resides. Once you are in this folder, click the Edit menu and select the Paste option. If a window appears telling you that license.dat already exists in this folder and asks you if you would like to replace the file click Yes.

Installation is now complete.