



Installation and Configuration: VirusScan 8.5 (Windows XP/Vista)

DOWNLOAD

VirusScan 8.5 can be downloaded from Union's ftp server. Open your web browser to

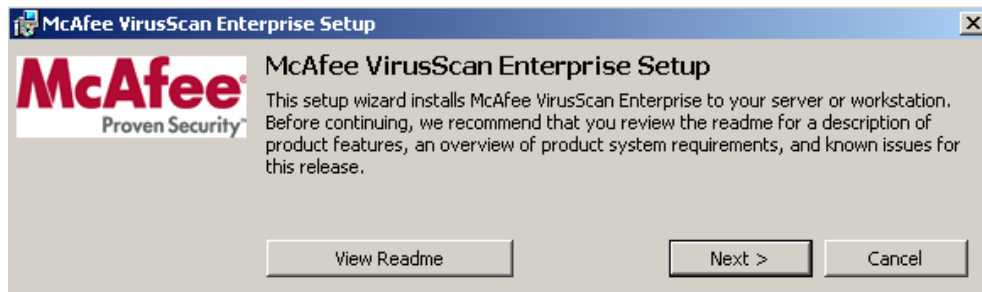
<http://its.union.edu/jservices/software.htm>

This URL will place you at a page with downloadable software files. Find and click on VSE85iLEN.zip to download the software. Save the file to a folder on your computer where you can easily find it later. Downloading is now complete.

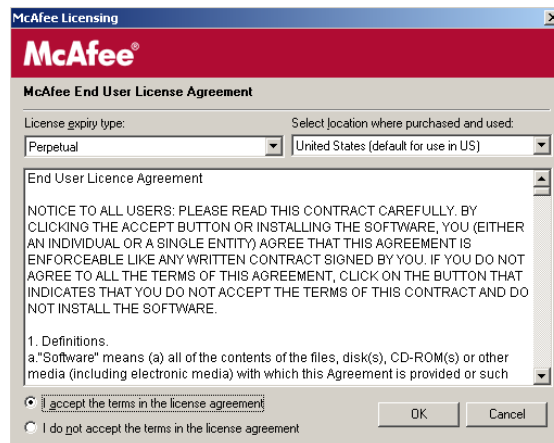
****Please uninstall any Virus software other than McAfee VirusScan 4.5.1 or VirusScan 7.1 BEFORE installing VirusScan 8.5.**

INSTALLATION

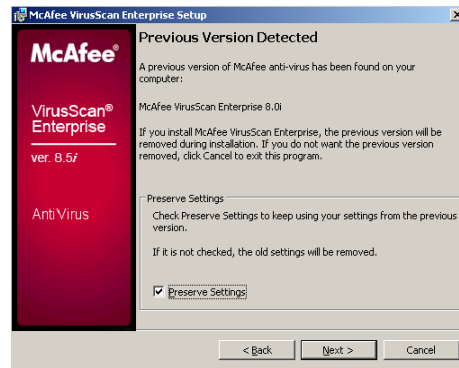
1. Open the zip archive you downloaded by double clicking on it. Once you have opened the zip file, double click the program named **Setup.exe** to begin the installation process.
2. The following window will appear. Click **Next**.



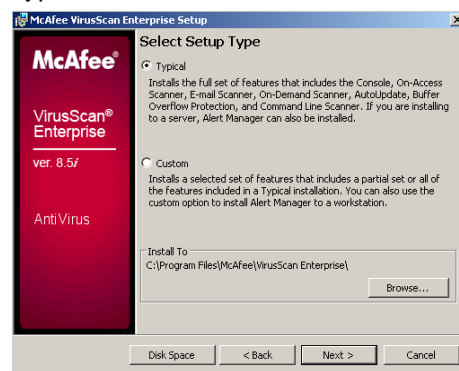
3. Set the License Expiry Type to **Perpetual**, read the license agreement and select "I accept the terms in the license agreement" and then click **OK** to proceed.



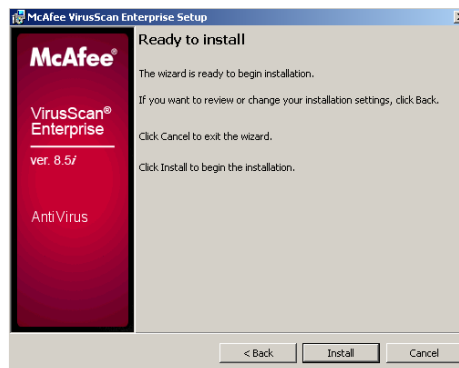
4. If the following window appears, check the box that says **Preserve Settings** and then click **Next** to proceed. This will appear if you have a previous version of McAfee's VirusScan installed.



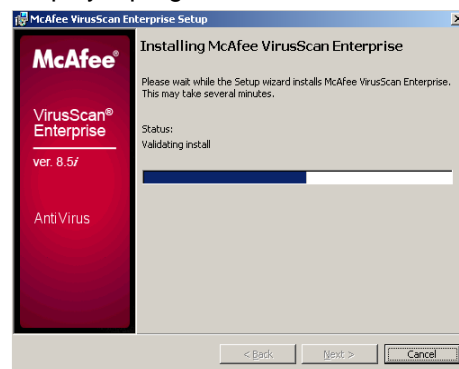
5. Select **Typical** for Setup Type and click **Next**.



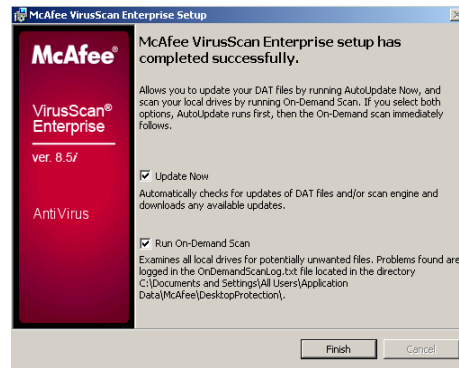
6. Click **Install** on the following window to begin the installation.



7. The following window will display a progress indicator for the installation.



- Click **Finish** on the following window to complete the installation. VirusScan will automatically update and run a scan of your machine at this point.



Installation of VirusScan 8.5i is now complete.

CONFIGURATION

- Open up **VirusScan Console** by going to **Start > All Programs > McAfee > Network Associates > VirusScan Console**
- Double click on **AutoUpdate**. Click on the **Schedule** button
 - Make sure there is a checkmark next to **Enable** under the Schedule Settings section.
 - Go to the **Schedule** tab. Make sure **Schedule Task** is set to Daily and the **Start time** is set to a convenient time.
- Click **OK** twice to return to the VirusScan Console.
- Verify that AutoUpdate is scheduled in the Console.

