


## Quick Start: File Transfer using Secure Shell

The Secure Shell 2 Windows client makes it easy and convenient to transfer files between your local computer and the remote host computer. You can upload and download files by using an intuitive, graphical user interface similar in functionality to the Windows Explorer.

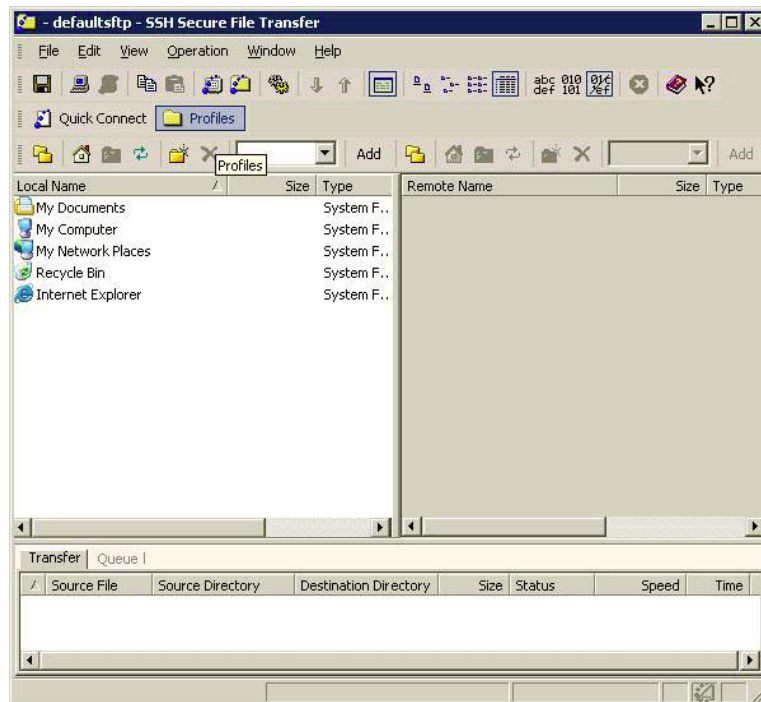
To Download and Install the Secure Shell application refer to the following document [http://acaddocs.union.edu/HT\\_WIN\\_SSH.pdf](http://acaddocs.union.edu/HT_WIN_SSH.pdf)

### Getting Started

You can open the File Transfer window by clicking on the New File Transfer Window button  on the Secure Shell 2 toolbar.



The resulting window will be displayed.



**Note**, however, that the SSH Secure Shell for Workstations Windows client is not just an alternative to an FTP client. You cannot, for example, use the SSH2 client to login to a normal, insecure FTP host. The remote host computer must be running an SSH2 server. You cannot use SSH2 to do anonymous FTP.

## Connecting to a Remote Host

Press **Enter/Space** to connect and the following connection dialogue box will be displayed.

Some portions of this menu will be blank and you will be required to fill in the necessary parameters to complete your connection. Such as the **Host Name:** and **Username:** entities. After you have specified these parameters click on the **connect** button.

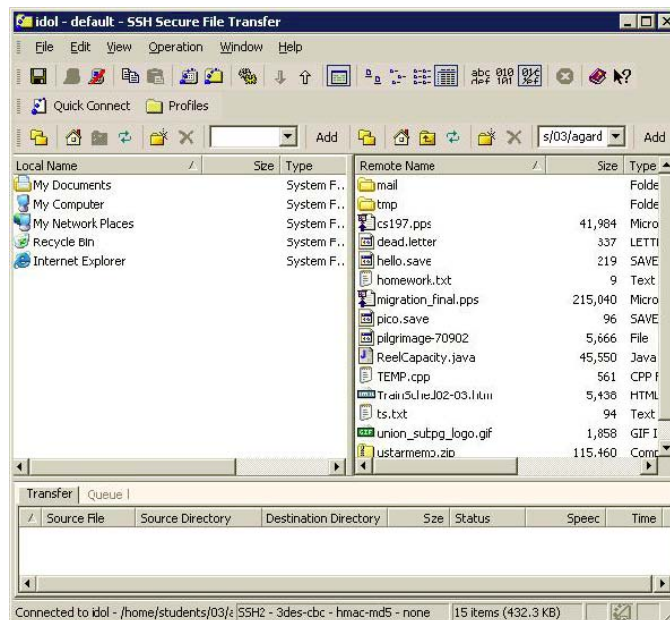
The example below shows a connection attempt to the **Host Name:** idol.union.edu with **Username:** rothg



The following password dialogue box will be displayed prompting you for your system password. Enter in your system password and then click **OK**. After correctly specifying your system password you will be logged into the system.



A window similar to the following window will be displayed. On the left pane, files on your computer will be displayed and on the right files on the server (e.g. idol) will be displayed.



## File Transfer

### Downloading Files from a server to your PC

By using the File Transfer window it is easy to download files from the remote host computer into your local computer.

To select multiple files, hold down the Shift or Control keys when selecting files with the mouse. If you hold down the Shift key, all the files and folders between the first and last selection will be selected. If you hold down the Control key, you can select individual files and folders one by one.

#### o Download button



You can click the Download button on the toolbar to download the selected file(s).

You can also, alternatively navigate, on the left pane, to the folder on your computer that you wish to download files into and simply drag the desired files from the right pane to the left pane.

### Uploading Files from your PC to a server

The File Transfer window can be used to upload files from your local computer to the remote host computer.

#### o Upload button



You first click the Upload button on the File Transfer window's toolbar, navigate to the proper directory on your machine and then select the files to be uploaded to the server. It is possible to upload several files at the same time. To select multiple files, hold down the Shift or Control keys when selecting files with the mouse. If you hold down the Shift key, all the files and folders between the first and last selection will be selected. If you hold down the Control key, you can select individual files and folders one by one.

You can also, alternatively, navigate, on the left pane, to the folder on your computer that contains the file(s) you wish to upload and simply drag them into the desired folder on the right pane.