

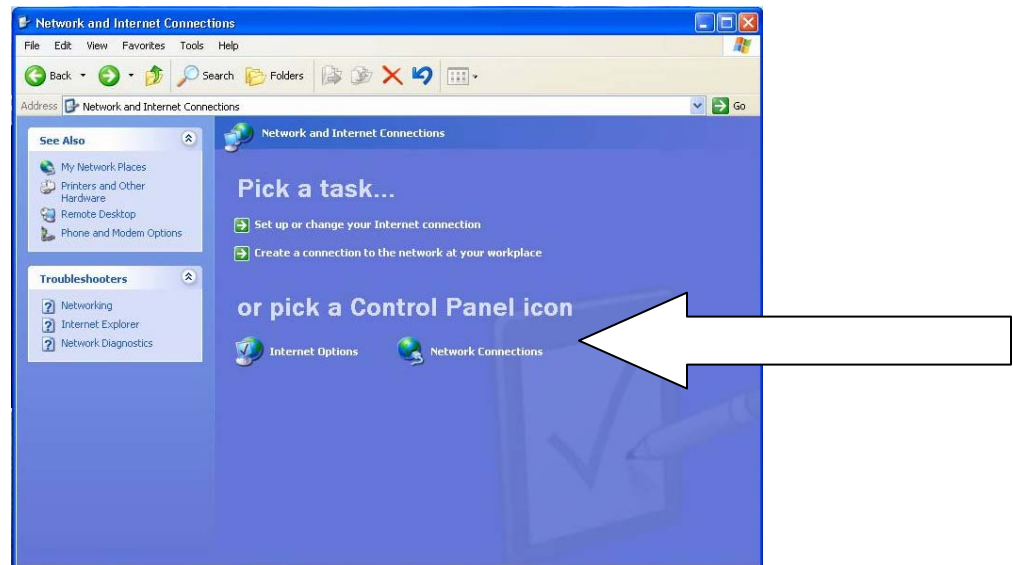
# Windows XP Wireless Setup Packet

Please Read and Follow Each Step  
Carefully before Proceeding to the  
Next Step

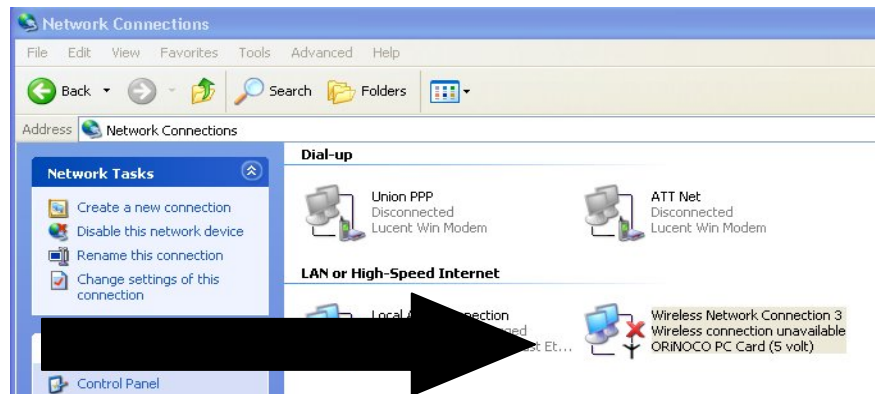
**Note:** You must be in an area where the wireless network is available for these instructions to work.

## Step 1 – Configure the Wireless Network Card

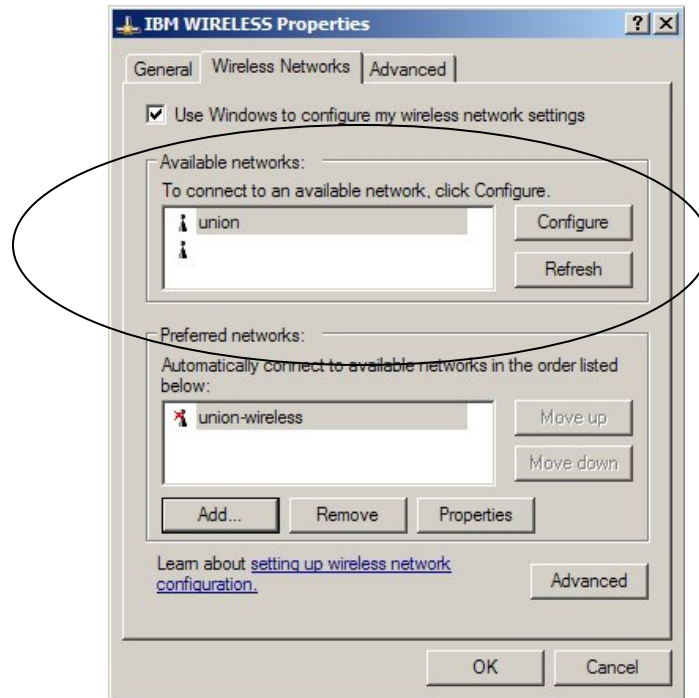
1. Click on **Start**, then **Control Panel** to open the control panels.
2. In the Network and Internet Connections window, click on the **Network Connections** icon.



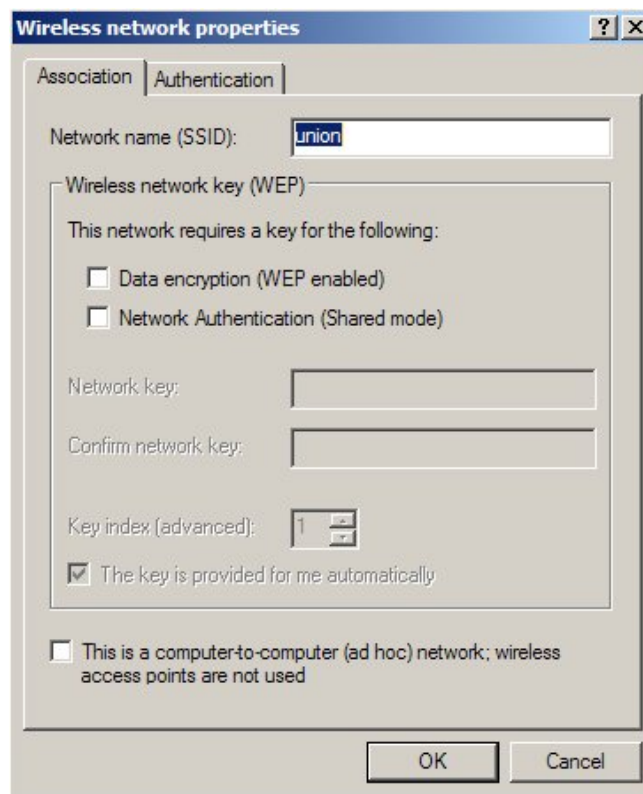
3. The **Network Connections** window will open. Double click on the **Wireless Network Connection** icon.



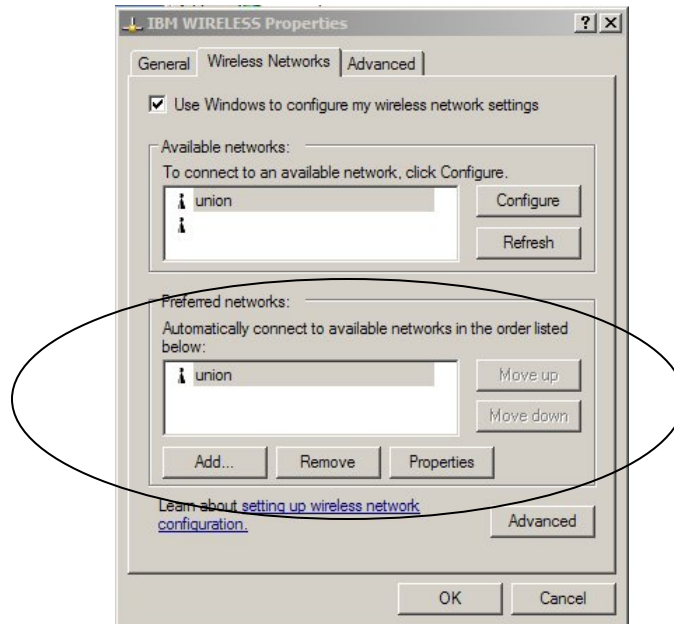
4. The **Wireless Properties** window will appear.
5. Click on the **union** network in the **Available networks:** section of the window and click on **Configure**.



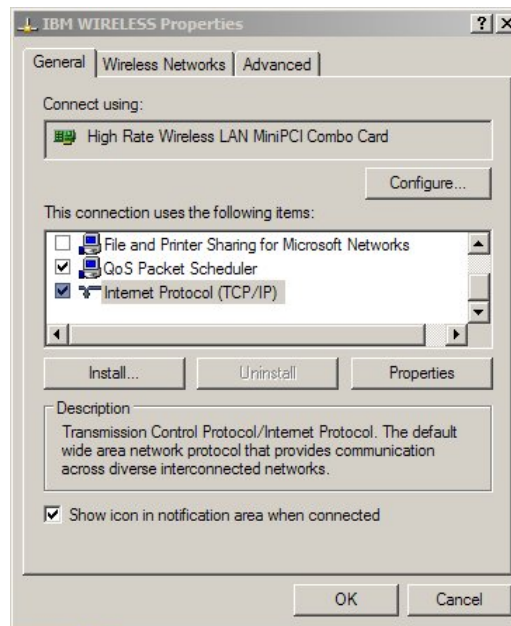
6. The **Wireless network properties** window will appear. Verify that your settings are the same as the ones in the screen below and click on **OK**.



7. The **Wireless properties** window will appear and the **union** wireless network will now be in the **Preferred networks:** section of the window. Click on **OK** to close the window.



8. The **Wireless properties** window will appear. Click on **OK** to the close the window.

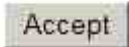


## Step 2 – Using the Union College Wireless Network

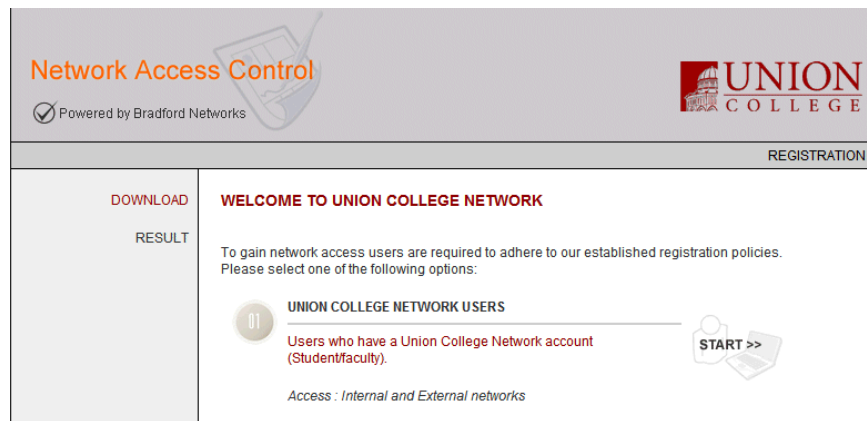
1. Open Internet Explorer. You will be automatically redirected to the Union College Responsible Use Policy Web Page. Read through the policy and then scroll down to the bottom of the page to accept the policy and continue with the registration process.

Please read the following Policy on Responsible Use of Union College Computing and Network Resources  
Dated 6-8-2006

Scroll down to read the entire policy and then click on the Accept button to continue. By clicking on Accept, you agree to this policy

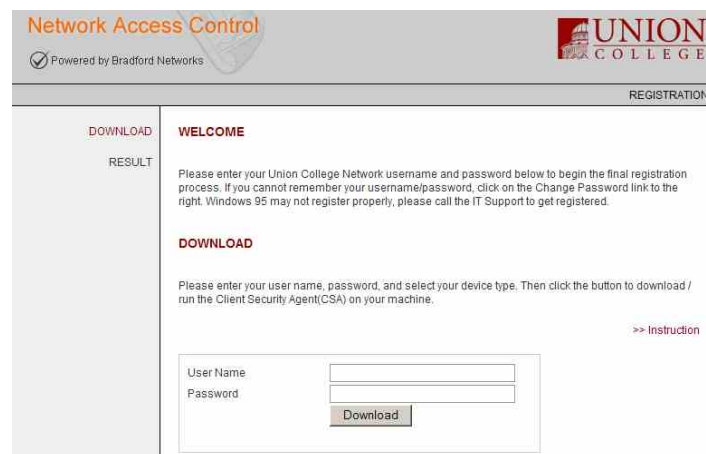


2. You will be automatically redirected to the Registration Web Page. Click on the **Start** link for **Union College Network Users** to begin the registration process.

The screenshot shows the "Network Access Control" registration page. At the top, it says "Powered by Bradford Networks" and features the Union College logo. The page is titled "REGISTRATION" and has a sidebar with "DOWNLOAD" and "RESULT" links. The main content area is titled "WELCOME TO UNION COLLEGE NETWORK" and includes instructions for users. A section for "UNION COLLEGE NETWORK USERS" is highlighted, with a "START >>" button next to it. The text indicates that users with a Union College Network account (Student/faculty) can access internal and external networks.

*Main Registration Page*

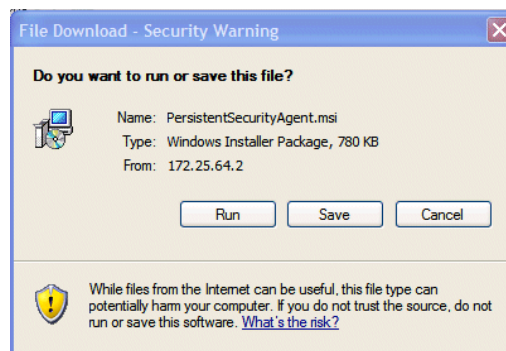
3. You will be redirected to a login page. Please login using your e-mail username and password. Click on the **Download** button to continue.

The screenshot shows the login page for the Network Access Control system. It features the same header as the registration page. The main content area is titled "WELCOME" and provides instructions for logging in. A "DOWNLOAD" section is highlighted, with instructions to enter the user name, password, and device type, then click the "Download" button. A "User Name" and "Password" input field is visible, along with a "Download" button. A link for ">> Instruction" is also present.

4. You will be redirected to the CSA download page. Please click on **Click here to download the Client Security Agent** to run the Client Security Agent.



5. You will be prompted to run or save the Security Agent installer. Click on **Run** to begin the installation process.



6. A second security warning will appear. Again click on **Run** to continue with the installation process.



7. Follow the steps on screen to complete registration. Please be patient while the CSA application scans your machine. It will scan your computer to make sure that it meets the minimum operating system and security requirements for Union's network. If any of these requirements are not met, you will be redirected to a web page explaining what did not pass and giving you instructions on how to correct this issue. If any remediation is needed, please complete the necessary items and then go thru this packet again to re-scan your machine.
8. Upon successful completion of the security scan, you will get a message that your machine meets the security requirements. At this time, **restart your computer**. After your computer is restarted, your network connection will be re-established and you will be connected to the network.