

## Quick Start: Secure Shell v3.2.3

Secure Shell is a program that allows secure network services over an insecure network. The SSH Secure Shell for Workstations Windows client, replaces other insecure terminal application such as Telnet and FTP. It allows you to securely remote login to remote host computers and provides encrypted and authenticated communication between two untrusted hosts.

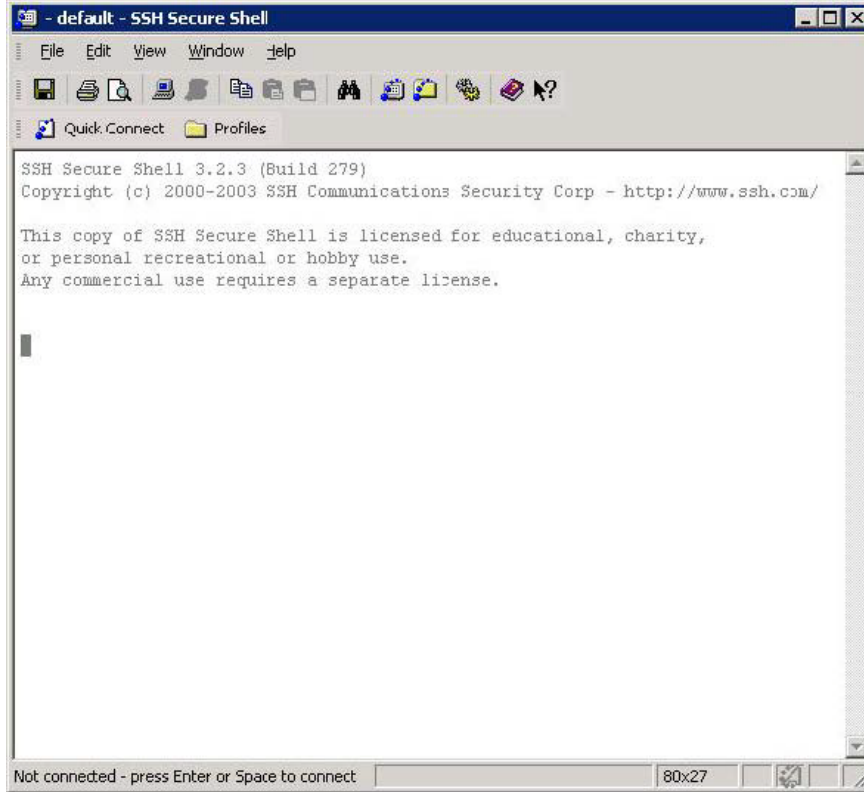
To Download and Install the Secure Shell application refer to the following document [http://acaddocs.union.edu/HT\\_WIN\\_SSH.pdf](http://acaddocs.union.edu/HT_WIN_SSH.pdf)

### Getting Started

To access the Secure Shell application, do the following:

Click on the Secure Shell icon as shown below.

The following window will be displayed.

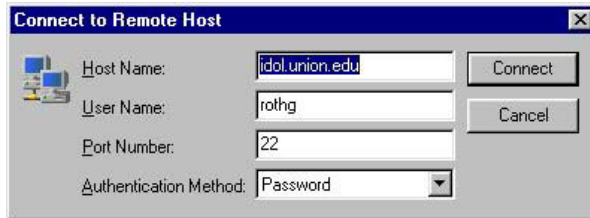


## Connecting to a Remote Host

Press **Enter/Space** to connect and the following connection dialogue box will be displayed.

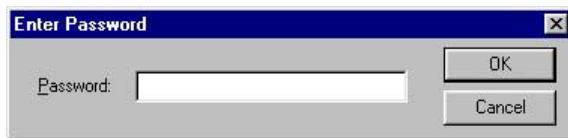
Some portions of this menu will be blank and you will be required to fill in the necessary parameters to complete your connection. Such as the **Host Name:** and **Username:** entities. After you have specified these parameters click on the **connect** button.

The example below shows a connection attempt to the **Host Name:** idol.union.edu with

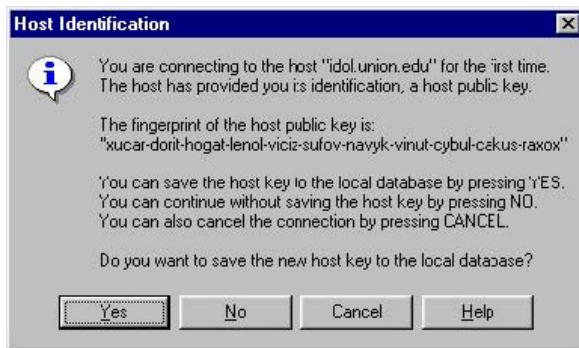


**Username:** rothg

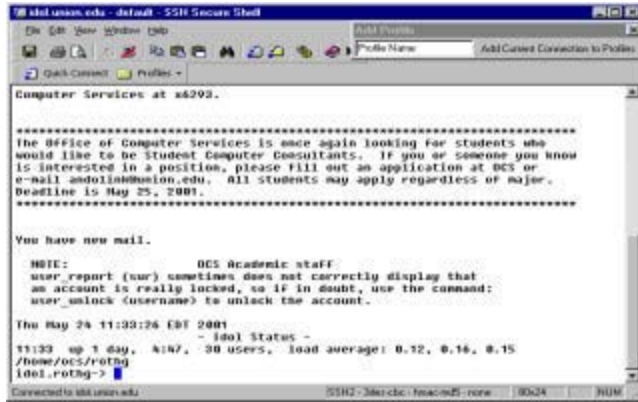
The following password dialogue box will be displayed prompting you for your system password. Enter in your system password and then click **OK**. After correctly specifying your system password you will be logged into the system.



If you have never connected before using Secure Shell v3.2.3 you may see the following menu displayed. If this is the case then click **Yes** and save the host key to the local database.



Once you have made a successful connection you will get a screen that looks similar to the one shown below.



```
ssh union.edu - default - SSH Secure Shell
Computer Services at x6293.
*****
The Office of Computer Services is once again looking for students who
would like to be Student Computer Consultants. If you or someone you know
is interested in a position, please fill out an application at OCS or
e-mail andolish@union.edu. All students may apply regardless of major.
Deadline is May 25, 2009.
*****

You have new mail.

NOTE: OCS Academic staff
user_report (usr) sometimes does not correctly display that
an account is really locked, so if in doubt, use the command:
user_unlock (username) to unlock the account.

Thu May 24 11:33:26 EST 2009
- load status -
11:33 up 1 day, 4:47, 30 users, load average: 0.12, 0.14, 0.15
/home/ocs/rothg
1001.rothg->
```