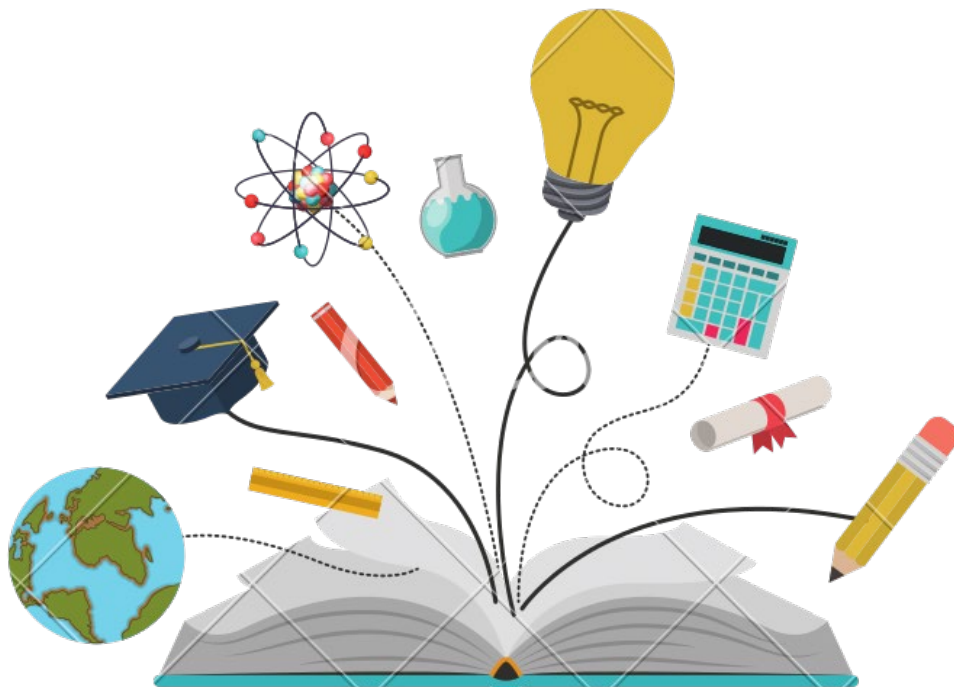


UNION
COLLEGE
FOUNDED 1795



FIRST DESTINATION REPORT
Class of 2018

Section 1: Methodology

For the purposes of this report, we define the Class of 2018 as those students who completed an undergraduate degree at Union College and graduated in either December 2017 or June 2018.

The primary means by which we collected information from members of the Class of 2018 was our "First Destination" survey. We invited 499 members of the Class of 2018 to take the survey, beginning in May 2018 and until it closed at the end of December 2018.

Additionally, in an effort to learn about the post-graduation activities of as many members of the Class of 2018 as possible, we searched for usable data beyond our survey. We found a significant amount of usable employment information about the Class of 2018 on LinkedIn and Facebook. In addition, we worked with faculty and employers to collect additional post-graduate outcomes. Combining data from all of these sources, we were able to account for the post-graduation activities of 85 percent of 2018 graduates.

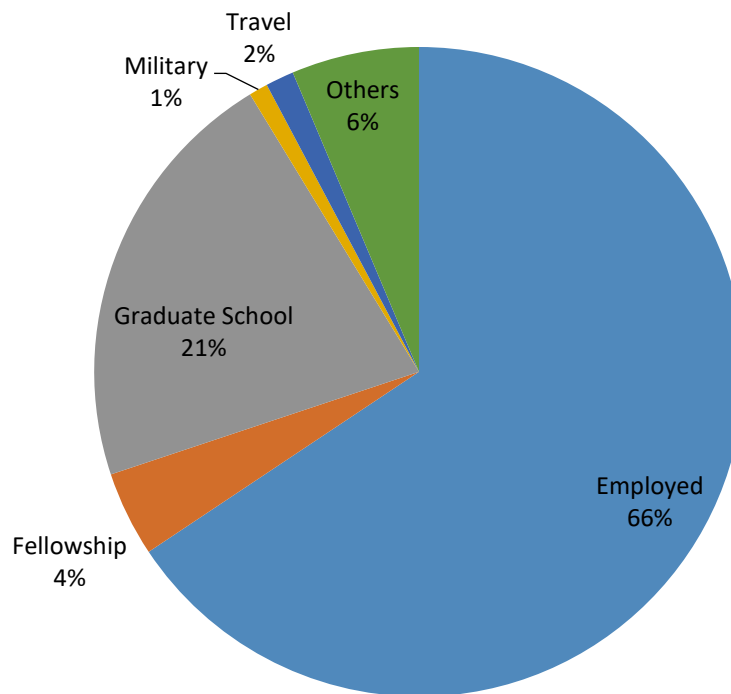
The National Association of Colleges and Employers ("NACE") coined the term "knowledge rate" to be used in lieu of "survey response rate" to reflect the approach of going beyond simply relying on a survey for obtaining outcomes information. "It's important to think about not how many graduates responded to your survey, but to identify the percentage of graduates for whom you have knowledge about their first-destination career outcomes. This is an acceptable research methodology as long as the data are reliable and verifiable." NACE encourages institutions to look at other legitimate sources of finding critical outcome information, such as faculty, employers, and social media. When using these sources, Union is careful to verify each outcome.

Section 2: Summary of Survey Statistics

Class of 2018

Number of Respondents	425
Number of Graduates	499
Knowledge Rate	85%

2018 First Destination Profile Summary



Response Profile Summary

Post-Graduation Activity	Count	Percentage
Employed	279	66%
Fellowship	18	4%
Graduate School	91	21%
Military	4	1%
Travel	6	2%
Others	27	6%
Grand Total	425	100%

Top Employment Fields

Top Employment Fields	Count	Percentage
Finance/Banking	45	16.1%
Engineering	40	14.3%
Education/Academia	28	10.0%
Sales	20	7.2%
Research	17	6.1%
Healthcare	14	5.0%
Technology	13	4.7%
Law	10	3.6%
Consulting	9	3.2%
Athletics	8	2.9%

*Top Employment Fields' percentage represents the percentage of employed respondents only.

Top Further Study Fields

Top Further Study Field	Count	Percentage
Medicine	12	13.2%
Law	9	9.9%
Nursing	4	4.4%
Computer Science	3	3.3%
Geology	3	3.3%
Mechanical Engineering	3	3.3%
Accounting and Business/Management	2	2.2%
Biomedical Engineering	2	2.2%
Health Administration	2	2.2%
I/O Psychology	2	2.2%
Innovation and Management	2	2.2%
Physician Assistant	2	2.2%
Psychology	2	2.2%
Teaching	2	2.2%

* Top Further Study Fields' percentage represents the percentage of graduate respondents.

Section 3: Employment Summary

Employment Field	Count	Percentage
Accounting	4	1.4%
Arts	2	0.7%
Athletics	8	2.9%
Biotech/Biomedical	3	1.1%
Business Analyst	5	1.8%
Communications	5	1.8%
Construction	4	1.4%
Consulting	9	3.2%
Education/Academia	28	10.0%
Engineering	40	14.3%
Entrepreneurial	3	1.1%
Environment	6	2.2%
Finance/Banking	45	16.1%
Government	2	0.7%
Healthcare	15	5.4%
Hospitality	4	1.4%
Human Resources	2	0.7%
Insurance	2	0.7%
Law	10	3.6%
Management Training	1	0.4%
Manufacturing	2	0.7%
Marketing	6	2.2%
Military	1	0.4%
Museum/Library	1	0.4%
Nanotechnology	1	0.4%
Pharmaceutical	1	0.4%
Politics	2	0.7%
Real Estate	7	2.5%
Recreation/Tourism/Travel	1	0.4%
Research	17	6.1%
Sales	20	7.2%
Sciences	5	1.8%
Social Service	3	1.1%
Social/Human Services	1	0.4%
Technology	13	4.7%
Not Provided	2	0.7%
Grand Total	279	100.0%

Section 4: Further Study Summary

Field of Study	Count	Percentage
Accounting and Business/Management	2	2.2%
Actuarial Science	1	1.1%
Applied Math	1	1.1%
Biomedical Engineering	2	2.2%
Biomedical Forensics	1	1.1%
Biomedical Sciences	1	1.1%
Business	1	1.1%
Chemistry	1	1.1%
Childhood Education	1	1.1%
Classical Composition	1	1.1%
Clinical Mental Health Counselling	1	1.1%
Computer Science	3	3.3%
Counseling and Human Services	1	1.1%
Creative Writing	1	1.1%
Education	1	1.1%
Environmental Engineering	1	1.1%
Film (Director)	1	1.1%
Finance	1	1.1%
Forensic Psychology	1	1.1%
Geology	3	3.3%
Health Administration	2	2.2%
Healthcare Administration	1	1.1%
Higher and Postsecondary Education	1	1.1%
I/O Psychology	2	2.2%
Image Processing	1	1.1%
Imaging Science	1	1.1%
Innovation and Management	2	2.2%
Law	9	9.9%
Mathematics	1	1.1%
Mechanical Engineering	3	3.3%
Medicine	12	13.2%
Nursing	4	4.4%
Optometry	1	1.1%
Philosophy	1	1.1%
Physician Assistant	2	2.2%
Physics	1	1.1%
Physiology and Biophysics	1	1.1%
Political Science	1	1.1%
Psychology	2	2.2%
Secondary Education, Math	1	1.1%
Social Personality Psychology	1	1.1%
Social Work	1	1.1%
Sports Administration	1	1.1%
Stage Management	1	1.1%
Teaching	2	2.2%
Not Provided	10	11.0%
Grand Total	91	100.0%

Section 5: Geographic Locations

Employment

Locations in the US	Count
New York	102
Massachusetts	87
Connecticut	20
California	6
New Hampshire	6
District of Columbia	5
Illinois	4
Pennsylvania	4
Florida	3
New Jersey	3
Ontario	3
Maryland	2
South Carolina	2
Texas	2
Virginia	2
Argentina	1
Colorado	1
Georgia	1
Iowa	1
Louisiana	1
Maine	1
Minnesota	1
North Carolina	1
Ohio	1
Oklahoma	1
Oregon	1
Tennessee	1
Vermont	1
Washington	1
Not Provided	7
Grand Total	272

International Locations	Count
Japan	2
France	1
India	1
Germany	1
Spain	1
Taiwan	1
Grand Total	7

Section 5: Geographic Locations (continued)

Further Study

Locations in the US	Count
New York	39
Massachusetts	13
California	5
Wisconsin	3
Colorado	2
Connecticut	2
Pennsylvania	2
Texas	2
Delaware	1
District of Columbia	1
Florida	1
Louisiana	1
Maine	1
Maryland	1
Michigan	1
New Jersey	1
North Carolina	1
Vermont	1
Washington	1
Not Provided	12
Grand Total	91

Fellowship

Location in the US	Count
District of Columbia	2
Grand Total	2

International Locations	Count
Uganda	2
Taiwan	2
Germany	3
Greece	2
France	2
India	2
South Africa	1
Philippines	1
Cambodia	1
Grand Total	16

Section 6: Fellowship by Major

Major	Name of Fellowship Opportunity	Location of Fellowship (city/state or country)	Total
Anthropology	Fulbright Student English Teaching Assistantships	Taiwan	1
Biology	American Farm School Post-Baccalaureate Fellowship	Greece	1
	Minerva Fellowship	Uganda	1
	Minerva Fellowship	India	1
	Minerva Fellowship	South Africa	1
Biomedical Engineering	Minerva Fellowship	Uganda	1
Chemistry	Minerva Fellowship	Philippines	1
English	Fulbright Student English Teaching Assistantships	Taiwan	1
French and Francophone Studies	TAPIF	France	1
	TAPIF	France	1
Geology	Minerva Fellowship	Cambodia	1
ID English/Anthropology	Fulbright Student English Teaching Assistantships	Greece	1
Mechanical Engineering	Fulbright Student English Teaching Assistantships	Germany	1
Neuroscience	CBYX for Young Professionals	Germany	1
	Minerva Fellowship	India	1
Political Science	Avodah Social Justice Corps	Washington DC	1
	Fulbright Student English Teaching Assistantships	Germany	1
Science, Medicine & Technology in Culture	James H Dunn, Jr. Memorial Fellowship	Washington, DC	1
Grand Total			18