



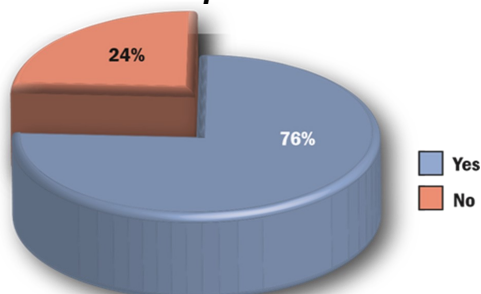


IN CASE OF FIRE REMEMBER TO
RACE AND SAVE LIVES

R  RESCUE anyone in immediate danger	A  ALERT others by activating the fire alarm system	C  CONTAIN the fire by closing doors behind you	E  EVACUATE the building and call 911 from a safe location
---	---	---	--

Fire kills more Americans each year than *all natural disasters combined*.
3,810 people died in fires in 2018.

Alcohol was a factor in 76 percent of all fatal campus fires.



Refer to the Evacuation Map on the back of your door. Know two ways out **before** an emergency occurs. Count the number of doors it takes to reach the exit.

EVERY SECOND COUNTS

← PLAN **2** WAYS OUT! →

FREQUENTLY ASKED QUESTIONS

Q: Why do we have residential fire & life safety checks?

A: Residential halls and apartments are a communal setting, and thus need to have rules in place to ensure that everyone is safe and comfortable. The College has identified items and behaviors that are dangerous to the community, and the checks allow staff members to identify violations, and work with students to address them.

Q: Who performs the checks?

A: Checks may be performed by Residence Life, EHS, or Campus Safety.

Q: When do these checks happen?

A: Checks will occur every semester. New York State Fire will also inspect residential spaces on an annual basis.

Q: What happens if a violation is found?

A: If a violation is found, you may be subject to fines, and the item in violation will be confiscated.

Q: My violation has been there since the previous check and no one has said anything. Why am I being fined now?

A: Sometimes violations are missed during checks. This does not exempt you from being fined when the violation is discovered.



Important Numbers:

Police-Fire- Medical 911
 Campus Safety 518-388-6911
 Env. Health & Safety 518-388-6340
 Residence Life 518-388-6117
 Wicker Wellness Ctr 518-388-6120
 Title IX: titleix@union.edu



Residence Hall Fire Safety Guide

Tips for a Successful Year
Living in Campus Housing



Jerry Bova
 Fire Safety Compliance Officer
 ISEC 183B
bovag@union.edu
 518-388-8009

WHAT IS PROHIBITED?



EXTENSION CORDS, MULTI-PLUG ADAPTERS AND CUBES ARE PROHIBITED.



COMBUSTIBLE TAPESTRIES AND FLAGS MAY NOT TAKE UP MORE THAN 50% OF WALL SPACE. STRING LIGHTS ARE A FIRE AND ENTANGLEMENT HAZARD.



CANDLES AND INCENSE, EVEN IF NOT BURNED, AND HOT PLATES ARE PROHIBITED.



TOASTERS, TOASTER OVENS. AND GRILLS ARE PROHIBITED.

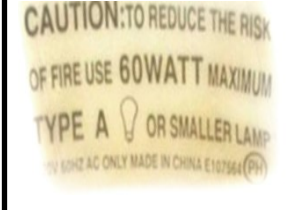
WHAT ELSE IS PROHIBITED?



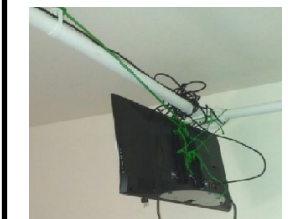
A COVERED SMOKE DETECTOR IS A VIOLATION OF NY STATE LAW.



HALOGEN LAMPS AND BULBS ARE PROHIBITED.



BULB WATTAGE MAY NOT EXCEED FIXTURE



NOTHING MAY BE CLOSER THAN 18" TO SPRINKLER HEADS



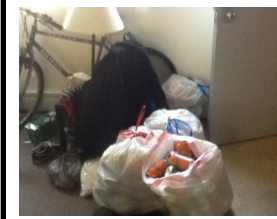
"DAISYCHAINING" OF POWERSTRIPS IS PROHIBITED.



NOTHING MAY BE ATTACHED TO THE CEILING



SMOKING IS PROHIBITED IN BUILDINGS AND ON CAMPUS PROPERTY



A CLEAR PATH TO THE DOOR IS REQUIRED. DOOR MUST FULLY OPEN.

WHAT IS APPROVED?



POWERSTRIP WITH SURGE PROTECTION



MICROFRIDGE. NOTE: MUST BE PLUGGED DIRECTLY TO A WALL RECEPTACLE.



CANDLE WARMERS



MINI FRIDGE (5 CU FT OR LESS) NOTE: MUST BE PLUGGED DIRECTLY TO A WALL RECEPT.



AIR FRYERS AND KEURIG WITH AUTO SHUT-OFF



TELEVISIONS



PORTABLE FANS



LED STRIP LIGHTS

NOTICE: THIS DOCUMENT IS NOT A COMPREHENSIVE LISTING OF ALL PROHIBITED OR APPROVED ITEMS. RESIDENCES WITH FULL KITCHENS HAVE FEWER RESTRICTIONS ON APPLIANCES. CONTACT YOUR RA FOR DETAILS.